



# Co-Craft

## Design Workshop

---

Collaboratively Crafted Design Solutions

3102 Fisher Rd  
Lansdale, PA 19446

[www.Co-CraftDesignWorkshop.com](http://www.Co-CraftDesignWorkshop.com)

# Architectural Metal Fabrication





# Exterior Railings

Front porches are an iconic element to the Philadelphia rowhome building typology, and the Owner of these twin homes in West Philadelphia wanted a design that would complete the look of their newly renovated project while remaining visually discreet.

Our railing design features a double vertical baluster to interplay with the vertical geometry of the existing steel columns, while the rest of the rail emphasis the horizontal patterns of the brick and wood decking. Care was taken to align the points of attachment with the grout lines of the existing brick coursing.

---

## Project Details

Completed 2023

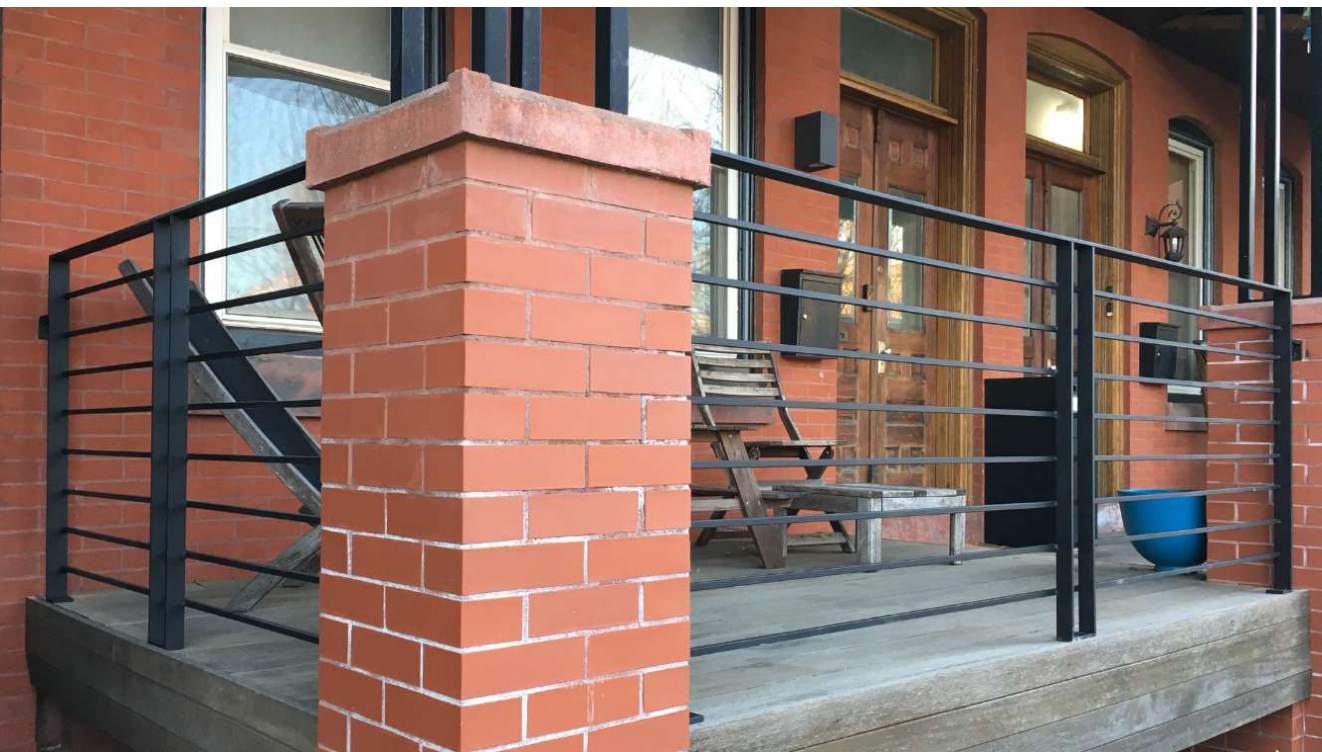
---

## Project Location

Florence Street, Philadelphia, PA

## Collaborators

Co-Craft Design Workshop











# Garden Fence

As part of a rear yard landscape installation in the East Falls neighborhood of Philadelphia, we were asked to design a garden fence that could provide a physical barrier while remaining visually open to maintain the landscape continuity between several adjacent properties.

Our design features a 42 foot long steel frame spanning between concrete footings located at each vertical post. A 6x6 wire mesh was used to infill the vertical panels, which is overlaid with a 1x1 wire mesh at the bottom course to contain the concrete rubble salvaged from the demolition of the previous concrete patio.

---

## Project Details

Completed 2019

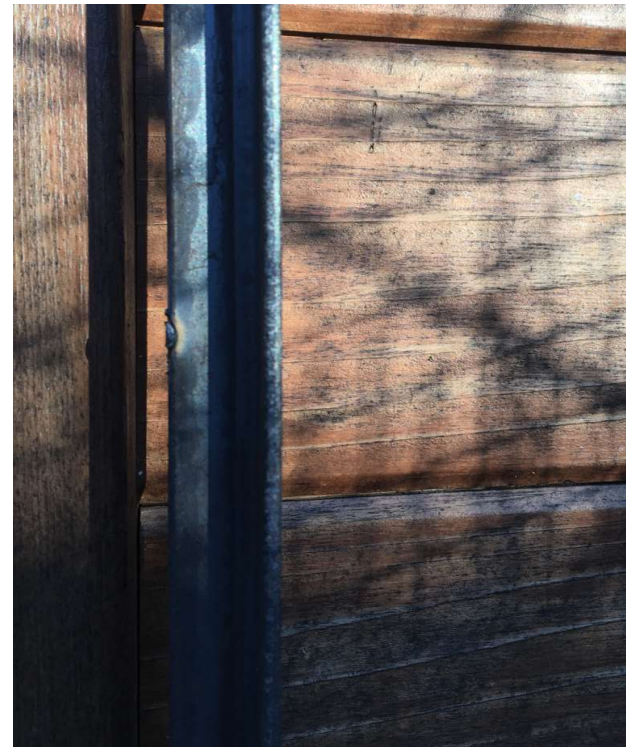
---

## Project Location

East Falls - Philadelphia, PA

## Collaborators

Co-Craft Design Workshop





# Fireplace Insert

As part of an extensive home renovation project, the Owner wanted to re-open the existing masonry fireplaces; however the existing stonework did not suite the aesthetic of the proposed interior. Our design features a board formed concrete finish to encase the existing stone with a new steel fireplace insert at the firebox opening. The coarseness of the concrete and the raw finish of the salvaged steel are juxtaposed with the smooth, clean finishes of the adjacent walls and floor.

---

## Project Details

Completed 2019

---

## Project Location

Newtown, PA

## Collaborators

Co-Craft Design Workshop

Re:Vision Architecture

Okinpivot (Concrete)











# Fireplace Surround

During an interior renovation project, the Owner of this town home in the Rittenhouse neighborhood fell in love with the look of the exposed brick firebox after removing the existing wood fireplace surround.

Our design creates a clean transition for the challenging geometry of the rough exposed brick to the existing steel firebox insert. Ten countersunk brass screws pick up the warm tone of the brick and highlight the detailing of the fasteners.

---

## Project Details

Completed in 2020

---

## Project Location

Spruce Street, Philadelphia, PA

## Collaborators

Co-Craft Design Workshop









# Exterior Stair

**\*In The Shop**

This exterior stair is destined for the Fishtown neighborhood of Philadelphia where the Owner would like to replace an existing wood stair at the rear of their row home. Detailing for the stair references other steel work in the vicinity and integrates well with other existing steel fabrications at the property. Serrated bar grate treads allow for a design that prevents the build-up of water and debris while maintaining a functional walking surface.

Additional design considerations included delivery and installation of the stair. Our design is fabricated as several components that it can be broken down into the primary frame, rails, and treads for shipping and re-assembly on site.

---

## Project Details

Completed in 2024

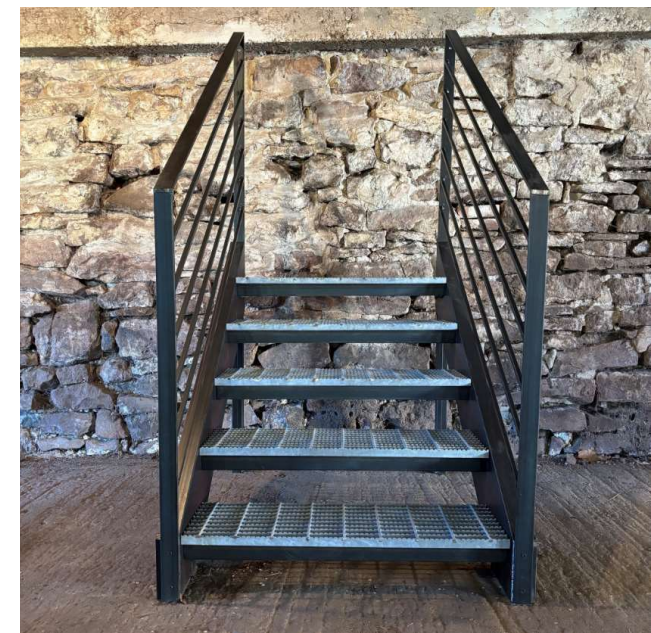
---

## Project Location:

W. Master Street, Philadelphia, PA

## Collaborators:

Co-Craft Design Workshop



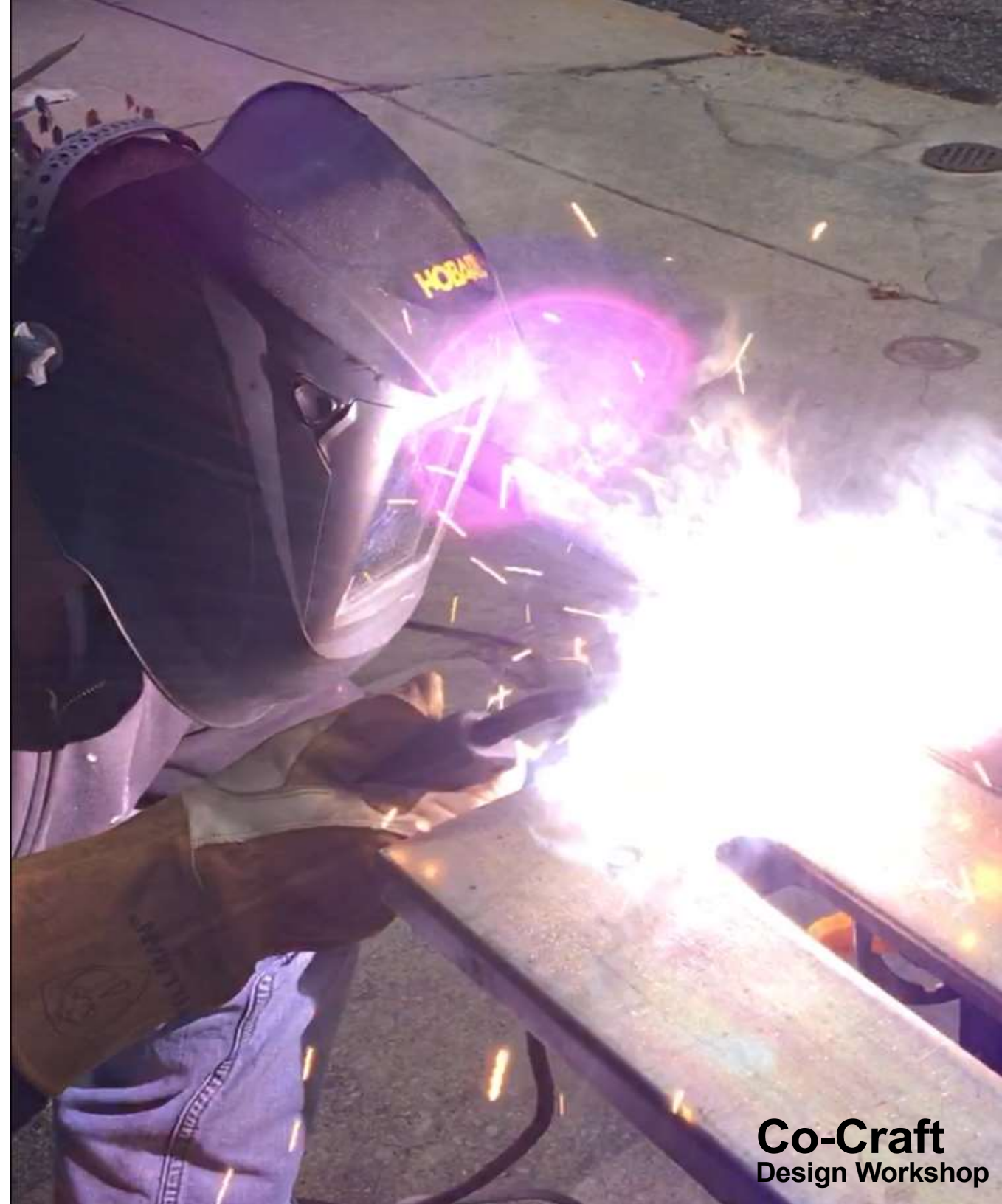




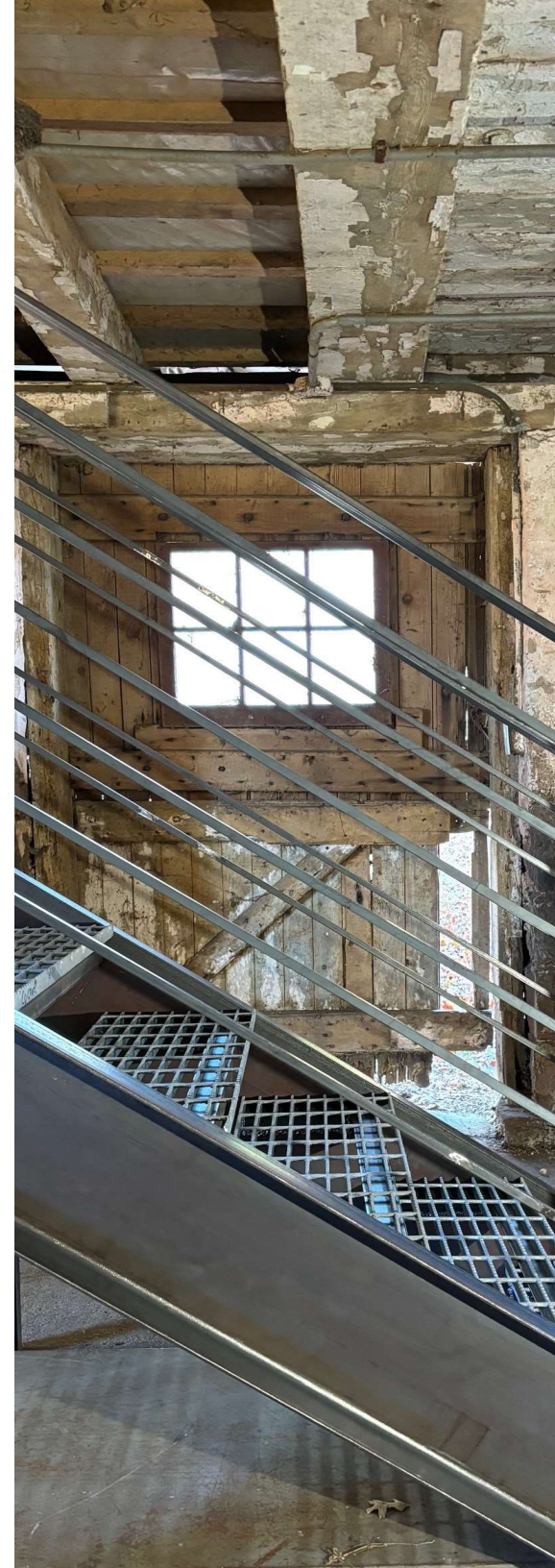
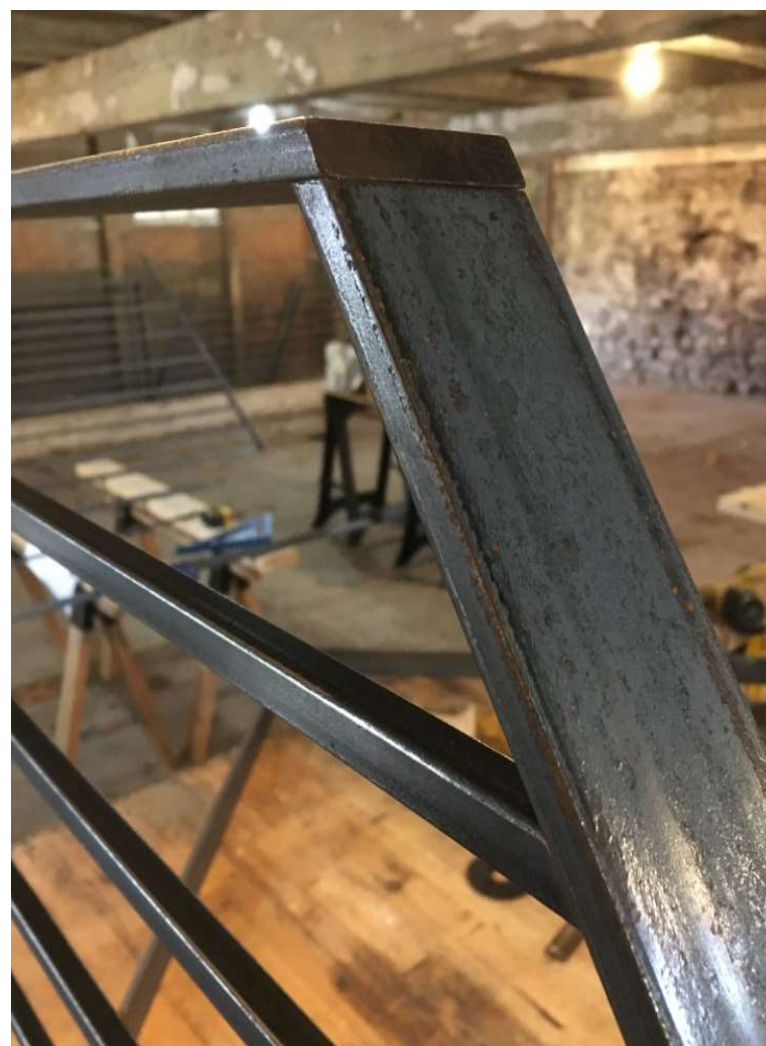


# In The Shop

Our workshop is a place for exploration, experimentation, fabrication, and education, where we constantly seek to push our boundaries. Process is an integral part of every design, and we like to share what's going on behind the scenes - feel free to drop by and join the conversation at our [blog link](#) below.









# Co-Craft Design Workshop

3102 Fisher Rd  
Lansdale, PA 19446

[www.Co-CraftDesignWorkshop.com](http://www.Co-CraftDesignWorkshop.com)

